



Barrier Cable Systems, Inc.

Manufacturer & Installer of High Performance Cable Structures & Their Components

9208 Enterprise Court

Manassas Park, VA 20111

Off: 703-659-1069 / Fax: 703-659-0943

www.barriercables.net

055220 BARRIER CABLE SYSTEMS

PART 1- GENERAL

1.1 DESIGN

The 2009 IBC compliant barrier systems must meet both following requirements:

- A. For automobile restraint: the systems must be capable of withstanding a single live load of 9,600 lbs applied horizontally in any direction and location (including columns and steel posts) to the barrier systems, with the load center acting at 27" inches above the driving floor or ramp surface over a 12" square (3-cables max) without exceeding the allowable barrier deflection of 18-inches. The minimum height of the vehicular barrier is 2'9".
- B. For pedestrian restraint only guard, the system must be capable of withstanding a single live load of 200 lbs applied in any direction or any location and 50 lbs/LF for its top the top rail. Intermediate cables shall be able to resist to a 50 lbs force applied in any direction. Deflection shall be such that the top rail minimum elevation of 42" and cable spacing (4" maximum up to 34" of the floor than 8" maximum from there to 42" wherever a 30" or greater fall risk may occur) shall be guaranteed at all times.

The Design approach taken should be consistent with requirement of each individual project. The barrier cable systems design must be capable of meeting both the automobile and pedestrian protection requirement of the code and must also limit deflections between restraining members. Distance between anchorages and the initial tension applied to the system must be designed so that the total deflection of the system under impact load will not result in the damage to other building materials, adjacent property, or the public.

The system, all the system's fabricated steel components and anchoring to the structural members shall be Designed and Installed by a Single Specialty Company which qualifications are acceptable to the Engineer.

1.2 DEFINITIONS

- A. Adjustable Anchorage: Adjustable devices that are used to connect the strand to the column.
- B. Anchor: Normally a ductile iron casting which houses the wedges and is used to transfer the prestressing force to the concrete or bearing member.
- C. Anchorages: A mechanical device comprising all components required to anchor the prestressing steel and permanently transmit the prestressing force to the concrete or bearing member.
- D. Barrel Anchor: A Cylinder metal device housing the wedges and normally used with a bearing plate to transfer the prestressing force to the concrete or bearing member.



Barrier Cable Systems, Inc.

Manufacturer & Installer of High Performance Cable Structures & Their Components

9208 Enterprise Court

Manassas Park, VA 20111

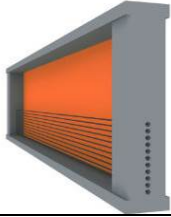
Off: 703-659-1069 / Fax: 703-659-0943

www.barriercables.net

- E. Backstressing: A Stressing procedure that insures that the wedges are properly seated into the anchor conical cavity.
- F. Bearing Plate: manufactured carbon steel flat bar stock placed between the cast or machined barrel anchor and the column.
- G. Casting: See Anchor.
- H. Coating: Material used to protect against corrosion
- I. Donut: See Barrel Anchor
- J. HDPE: Acronym for High Density Polyethylene Plastic. Minimum density is 0.941gm/cm³
- K. Inserts: Internally threaded devices designed to connect certain wedges type anchorages to the column.
- L. Jack: A Mechanical device (hydraulic) used for applying stressing force to the barrier cable.
- M. Jack Grippers: Wedges used in the jack to hold the strand during the stressing operation.
- N. Jacking Force: The Maximum temporary force exerted by the jack while introducing the prestressing force into the concrete or bearing member through the barrier cable.
- O. Kip: 1 Kip = 1000 lb force (1Kip=4.44KN)
- P. LDPE: Acronym for low density Polyethylene Plastic. Minimum density is 0.91-gm/cm³
- Q. MUTS: Acronym for Minimum Ultimate Tensile Strength. It is the force required to break the strand outside of the Anchorage area.
- R. Nose piece: the front part of the jacking devices that fits into the stressing pocket, to align the jack with the anchor.
- S. Pocket former: A Temporary device used at the stressing end during casting of the concrete to provide opening in the concrete, allowing the stressing equipment access to the anchor cavity.
- T. Seating Loss: the relative movement of the wedges into the anchor cavity during the transfer of the prestressing force to the anchorage, resulting in some loss of presteressing force.
- U. 7-wire strand: Six high strength steel wires twisted around a center (King) wire.
- V. Stressing Equipment: Consists of a properly calibrated jack and pressure gauge with pump and hose.
- W. Stressing Force: See Jacking Force
- X. Wedges: Pieces of tapered metal with teeth which bite the stand during transfer of the jacking force the teeth are beveled at the front end to assure gradual development of the force over the length of the wedge. Two or three piece wedges are normally used.
- Y. Wedge Set: See seating Loss.

1.3 SUBMITTALS

- A. Shop Drawings: Installation drawings including plans, elevation, section, details, and noted prepared by or under supervision of qualified installer detailing barrier cable layout and installation procedures including the following:
 - 1. Numbers arrangement length, anchor location, anchor details and designation of barrier cables. Installation and fabrication details of all angles, posts or fabricated steel members needed and their anchoring into the structure.
 - 2. Stressing Procedures and jacking forces to result in the final effective forces.
 - 3. Stressing records: Filled out by testing agency during stressing operations:



Barrier Cable Systems, Inc.

Manufacturer & Installer of High Performance Cable Structures & Their Components

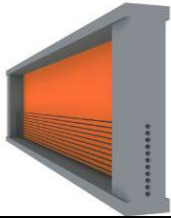
9208 Enterprise Court

Manassas Park, VA 20111

Off: 703-659-1069 / Fax: 703-659-0943

www.barriercables.net

- Name of the project
 - Date of approved installation drawings used for installation and stressing
 - Floor number and concrete placement area.
 - Date of stressing operation.
 - Weather conditions including temperature and rainfall
 - Name and signature of inspector
 - Name of individual in charge of stressing operation
 - Serial or identification numbers of jacks and gage
 - Date of jack and gage calibration certifications
 - Gage pressure to achieve required stressing force per supplied calibration chart.
 - Tendon identification mark.
 - Actual gage pressure
- B. Calculation note: Calculation note stamped by an experienced Professional Engineer and produced in accordance with the IBC and PTI (Post-Tensioning Institute) and providing at a minimum the following:
- Calculation of tendons minimum force for anti-sag criteria.
 - Calculation of tendons maximum force under impact and verification of acceptance criteria for each cable run.
 - Verification of the maximum deflection criteria for the barrier under impact for each significant cable.
 - Determination of the pre-tensioning requirements to cover all criteria above including losses unless a specific procedure is in place to compensate for seating losses.
 - Provide a load summary of permanent/accidental forces applied by the barrier for verification of their acceptability by the project Engineer of Records.
 - Design calculations for all steel posts, angles or hardware used in the construction of the barrier cable. Design should be based on impact forces including direct impact on steel posts used in the barrier construction.
- C. Certified Mill test Reports: shall be furnished upon request for each coil. Real or pack of strand containing as minimum the following information:
1. Coil Number
 2. Ultimate Tensile Strength
 3. Nominal Diameter and steel Area of strand.
- D. Hardware Data Sheets: shall be furnished upon request for each hardware component used in the cable anchoring system.
- E. Operation and Maintenance Manual: The system installer shall provide a system maintenance and operations guide to the Owner providing at a minimum the following data:
- Recommended inspection periodicity and procedures.
 - Maintenance and repair procedures for minor damage (coating repair...).
 - Action plan in case of major damage impairing the system functionality.



Barrier Cable Systems, Inc.

Manufacturer & Installer of High Performance Cable Structures & Their Components

9208 Enterprise Court

Manassas Park, VA 20111

Off: 703-659-1069 / Fax: 703-659-0943

www.barriercables.net

PART-2 PRESTRESSING STEEL

2.1 GENERAL SPECIFICATION

- A. Prestressing steel used for barrier cable shall be wire steel strand which consist of one center wire with six wires spirally wrapped around it. The 7 Wire steel strand shall confirm to Galvanized Prestressed Concrete strand (GPC) Zinc coating weigh shall be class A as designated in ASTM A475, table 4. For vehicular applications, strand nominal diameter will be at least ½” and MUTS of 250 Ksi or better.
- B. Use of plastic or Epoxy coated strands is not permitted under any circumstance.
- C. Strand packs reels, or coils shall be indentified at the source as to grade, coil number and type.

2.2 ACCEPTANCE CRITERIA

- A. Strand used for barrier cable shall meet the minimum requirement of the appropriate ASTM specification as the project specification. No exception will be permitted.
- B. The Galvanized coating used for the barrier cable shall be free of damage so that the uncoated steel is not exposed to the elements. Small surface blemishes or schares do not expose the steel strand shall not be cause for rejections. Cracked or brittle coating will be rejected.
- C. Small areas of damage may be repaired using the manufactures recommended methods provide that such repairs and repair methods have been approved by responsible engineer of record. Repair material and Methods shall be compatible with the coating material.

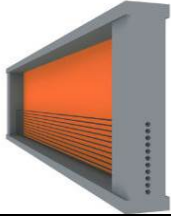
PART-3 ANCHORING DEVICES

3.1 ANCHORS

Castings shall be nonporous and free of sand, blow holes, voids, and other defects. Casting shapes may be rectangular square, or Cylindrical with a tapered corrival hole designed to receive the matched tapered wedges. Both the Casting Machined barrel anchors are used in same way and should be rated to meet the impact load requirement specified.

3.2 INSERTS

These devices may be installed during the column placement (ferrule loops) or may be installed after the column is in place. All insert shall meet the ultimate pull out and shear load requirement of the design and, as a minimum shall meet the impact load requirement. Only inserts rated or minimum 2 to 1 safety ratio for ultimate pull out or shear is used unless test reports demonstrate equivalent performance in the field.



Barrier Cable Systems, Inc.

Manufacturer & Installer of High Performance Cable Structures & Their Components

9208 Enterprise Court

Manassas Park, VA 20111

Off: 703-659-1069 / Fax: 703-659-0943

www.barriercables.net

3.3 WEDGES

Wedges is made from carbon steel bar and are hardened by heat treatment after the indentations are machined on the inside and is designed to penetrate and hold the barrier cable the wedges must be under sufficient force to have the teeth engaged into the barrier cable to insure the proper working action of barrier cable systems. The procedures used to accomplish this task must never exceed maximum lateral force allowed by the column. Wedges shall be zinc plated or galvanized for corrosion resistance.

3.4 ADJUSTABLE ANCHORS

This device is used to mechanically seat the wedges and stress the barrier cable. It can be used to mechanically re-adjusted the tension of the barrier cable after installation or allow repair of the barrier cable after installation. The cable installed in these devices shall be backstressed per section 5.4B either before after the installation of the anchor.

3.5 BEARING PLATES

The bearing plates are intended to distribute the force over a greater bearing area of concrete to withstand the required impact load. The steel plate used shall meet ASTM A36. Size thickness will be adjusted to meet the design requirement,

3.6 STRUCTURAL STEEL MEMBERS

Brackets or steel posts are sometimes used as attachment to columns, in lieu of columns or to reduce the span between columns as well as for the purpose of mounting the cables or anchorage components. These elements should be custom designed for the project and will be able to stand permanent and impact forces including direct car impact when possible. Anchoring of such elements will be designed and detailed to ensure that their connection exceed the required strength resulting from impact on the barrier or directly on the element.

3.7 BARREL ANCHOR

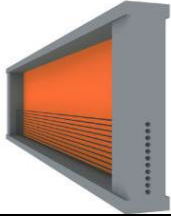
Barrel anchors are cast or machined cylinder anchor devices (having a wedge cavity), these devices are designed to anchor the cable but do not have a bearing surface and shall be used with an appropriate bearing plate only.

3.8 ADJUSTABLE ANCHOR/INSERT TYPE

Wedges shall be initially mechanically and/or hydraulic seated at 80% MUTS into the barrel housing to ensure engagement of the wedges teeth into the barrier cable, the final force of the barrier cable is achieved mechanically through the threading adjustment of the stem of anchoring devices into the insert. The cable installed in these devices shall be backstressed in accordance with section 5.4B either before or after installation of the Anchor.

PART-4 COATING

4.1 COATING TYPE



Barrier Cable Systems, Inc.

Manufacturer & Installer of High Performance Cable Structures & Their Components

9208 Enterprise Court

Manassas Park, VA 20111

Off: 703-659-1069 / Fax: 703-659-0943

www.barriercables.net

All exposed Barrier cable elements shall be galvanized or zinc plated.

4.2 MINIMUM THICKNESS, DIAMETER AND SPECIFIC PROPERTIES

Zinc coating shall be produced to comply with ASTM Specification A-475 Class A, table 4 Coating weight. Galvanized coatings shall be applied by either hot-dip, hot -dip and post-drawing or electro plating process to ensure complete zinc around each individual wire of the strand.

PART5- INSTALLATION AND STRESSING

5.1 QUALIFICATIONS

Vehicular barrier cable system shall be installed in accordance with following guidelines:

1. The system shall be Engineered holistically under the responsibility of a specialty Barrier Cable System specialty company manufacturing and certifying its installation in the field to comply with the approved plans and codes (2009 International Building Code).
2. The installation shall be performed under permanent direct supervision by PTI Certified installer or qualified technician; with three (3) years of experience of fifteen (15) projects of similar size and scope.
3. Proper calibrated stressing equipment shall be supplied for the application and/or barrier cable systems that are necessary to perform the work.

5.2 INSTALLTION OF BARRIER CABLE THROUGH COLUMN

- A. At intermediate column, provide sleeves insuring a hole which is a minimum 1/8" (3-mm) diameter larger than the barrier cable diameter used (including coating material). Spacing and position of the cables shall be executed by the concrete or precast supplier to match the dimensions given by the vehicular barrier cable shop drawings. Errors resulting from misunderstanding or lack of compliance with the barrier system drawings will be repaired by the concrete contractor (CIP or Precast) prior to the systems erection.
- B. At end column, Anchors shall be recessed in the column prior to concrete placement or shall bear against the column surface (barrel anchor type). Position, spacing and reinforcing defined in shop drawings will be installed by the concrete (CIP or Precast) supplier per the systems shop drawings.



Barrier Cable Systems, Inc.

Manufacturer & Installer of High Performance Cable Structures & Their Components

9208 Enterprise Court

Manassas Park, VA 20111

Off: 703-659-1069 / Fax: 703-659-0943

www.barriercables.net

5.3 STRUCTURAL STEEL ANGLES & COLUMNS

- A. Where applicable, structural steel support or anchoring angles shall be installed on the face of the column. These structural members shall be located far enough from the edge of the column so as not cause concrete spalling or cracking when the cables are stressed. The connections to the column shall develop the maximum impact design load for all the barrier cables at the location.
- B. Where applicable, structural steel support or anchoring columns shall be installed as shown in the shop drawings. These structural members shall be positioned in the proper alignment so to avoid kinks in the barrier strands. Steel columns shall be anchored to the structure prior to the cable installation and shall not deflect under the barrier loads.

5.4 SPECIAL STRESSING CONSIDERATION

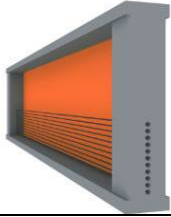
- A. All the barrier cable shall be stressed to the stressing forces defined in the project approved shop drawings.
- B. All fixed and stressing anchorages shall be backstressed. This backstressing is performed after the cables are stressed; the jack is then removed and placed so that jack nose is bearing on the opposite side of the bearing member. The cable shall then be stressed to a force equal to 80% of the minimum ultimate tensile strength (MUTS) of the strand and no less than 25 Kips. In concrete applications, it is necessary to use a slotted plate to prevent damage to backside of the member by the jack nose.

5.5 FINISHING OF ANCHOR RECESSES

- A. Barrier cable tails shall be removed within 1 inch (25mm) from the face of the column using either an oxyacetylene torch or a metal cut off saw.
- B. Anchor recessing (if possible) shall be filled with non-metallic non-shrink grout as soon as practical after stressing and cutting, under no circumstances shall the grout used for this purpose contain chlorides or other chemicals known to be deleterious to the steel.
- C. Prior to installing the grout the inside concrete surfaces of the recess shall be cleaned to remove laitance or grease to enhance the bond of the grout.

5.6 FINAL INSPECTION & PROTECTION OF BARRIER CABLE SYSTEMS

- A. Barrier cable zinc coating damaged during installation, including backstressing operations or tail cutting shall be repaired with a cold galvanizing spray.



Barrier Cable Systems, Inc.

Manufacturer & Installer of High Performance Cable Structures & Their Components

9208 Enterprise Court

Manassas Park, VA 20111

Off: 703-659-1069 / Fax: 703-659-0943

www.barriercables.net

- B. At anchorage columns, Barrier cable that passes through a hole in the column to anchorage shall have the hole sealed to prevent water from following the path of barrier cable to the anchorage unless the barrier cable slope prevents that from happening.
- C. When cables tension is questioned, tension verification will be performed by means of an approved cable tension gage without removing or damaging the cables.

5.7 WARRANTY

At the completion of the project and prior to the final payment, the system supplier will provide a written warranty letter for a minimum period of three (3) years on all materials, components and installation.