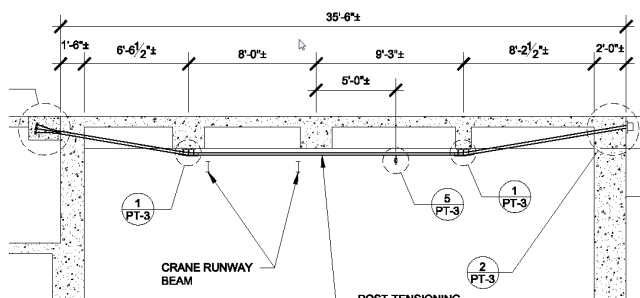


Designed, supplied and installed, the Additional Post-Tensioning system imagined by BCSI parent Company provided a drastic increase in load capacity to the existing old reinforced concrete slab and beam system at a fraction of the cost compared to a traditional steel solution. The system was implemented extremely fast and could be accommodated between the forest of pipes and ducts without requiring any shutdown. Tendons consisted of 4 0.6"-270 Ksi monostrands grouted inside an external PE duct and stressed after curing which provide the highest level of multi-barrier corrosion protection. The anchors were encapsulated with plastic grout cap then concrete encased.



**PROJECT:** Long Quarter Pump Station (Sep 2009)  
Towson MA

**CLIENT:** Johnson Construction Company, Inc.

**ARCHITECT:** Rummel, Keppler & Kahl (RK&K) /  
Kline Engineering

**OWNER:** Baltimore County Public Works

**VEHICULAR BARRIER CABLE SYSTEM**



**BARRIER CABLE SYSTEMS, INC**

5212 Midland Rd

Midland, Virginia 52728

P: (703) 659-8388

F: (703) 659-9043